

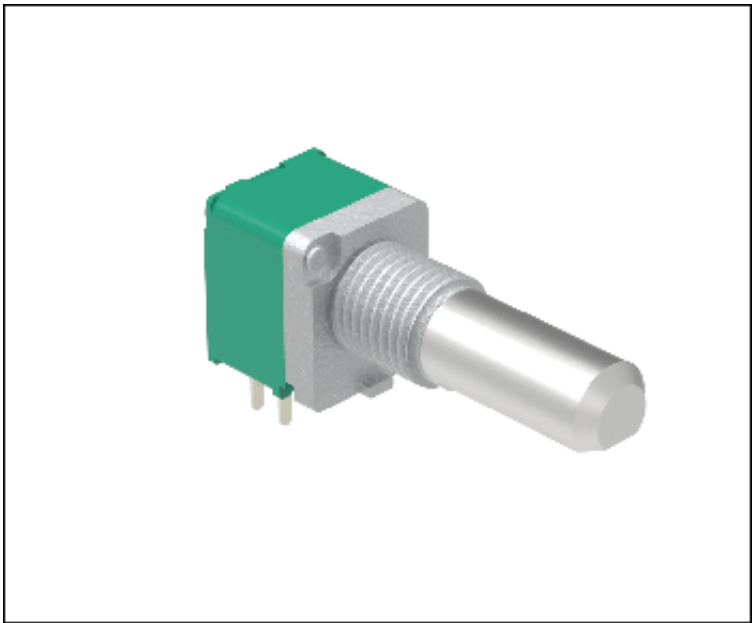
9mm Size Metal Shaft Multi-ganged Type RK097 Series

Single-shaft without switch type

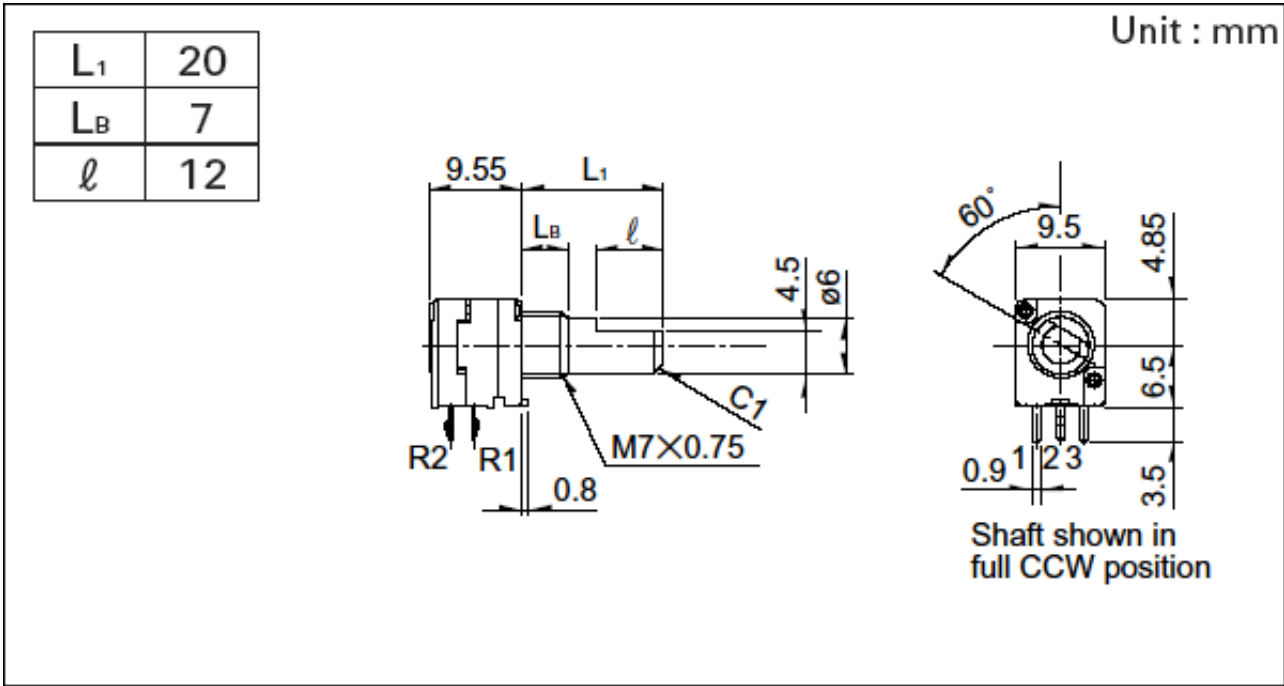
Part number		RK097122008T
Number of resistor elements		Dual-unit
Mounting direction		Horizontal type
Fixing method of bushing		Screw
Shaft types		Flat
Length of the shaft		20mm
Center detent		Without
Total resistance		10k Ω
Resistance taper		3B
Operating temperature range		-20°C to +70°C
Electrical Performance	Total resistance tolerance	$\pm 20\%$
	Rated power	0.05W
	Maximum operating voltage	50V AC, 10V DC
	Residual resistance	20 Ω max.
	Gang error	-40dB to 0dB 3dB max.
	Insulation resistance	100M Ω min. 250V DC
	Voltage proof	300V AC for 1 minute
Mechanical Performance	Total rotational angle	300° $\pm 5^\circ$
	Rotational torque	2 to 25mN·m
	Stopper strength	0.5N·m

Push-pull strength	100N max.
Vibration	10 to 55 to 10Hz/min., the amplitude is 1.5mm for all the frequencies, in the 3 direction of X, Y and Z and for 2 hours respectively
Operating life	15,000 cycles
Japan	800
Export	1,600

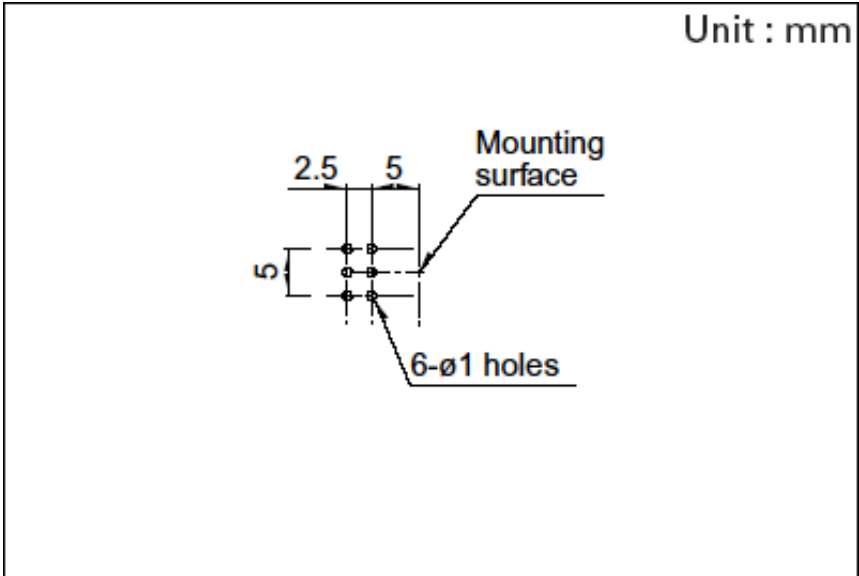
Photo



Dimensions

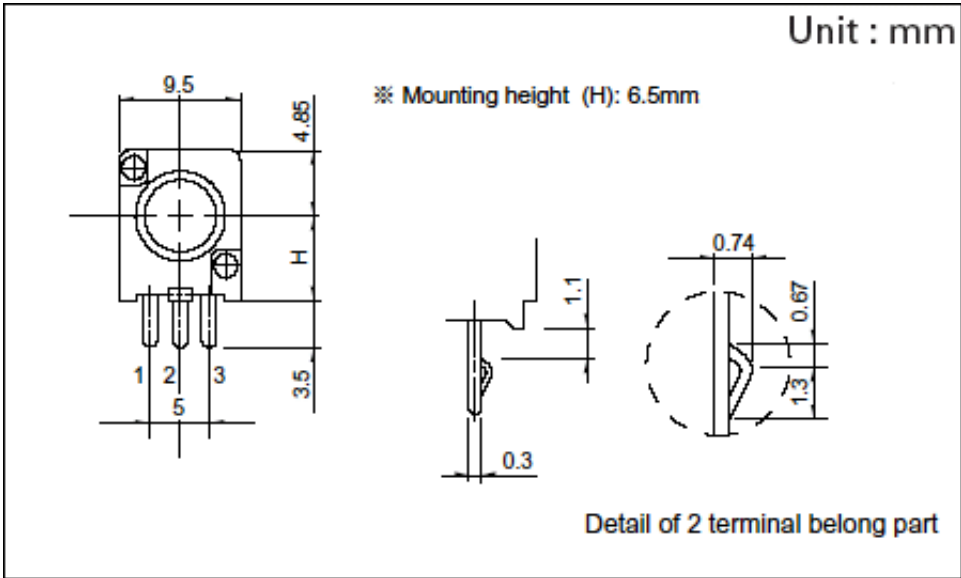


Mounting Hole Dimensions



Viewed from mounting side.

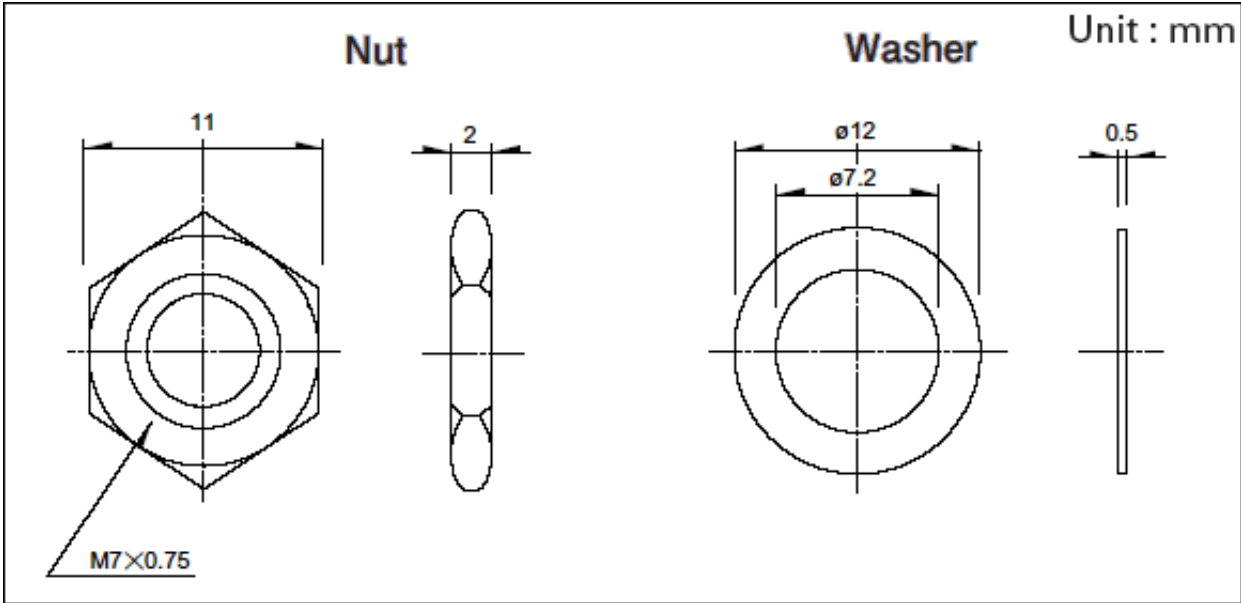
Dimensions of Terminal



Dimensions of Bushings

Bushing	M7
Dimensions	<p>Unit : mm</p> <p>0.8 0.8 6 X Y X Y 0.8 2 Y X</p> <p>M7×0.75</p> <p>Detail A</p>

Attached Parts



These parts are attached to the following products.

Packing Specifications

Tray		
Number of packages (pcs.)	1 case / Japan	800
	1 case / export packing	1,600
Export package measurements (mm)		373×540×207

Soldering Conditions

Reference for Dip Soldering		
Preheating	Soldering surface temperature	100℃ max.
	Heating time	2 min. max.
Dip soldering	Soldering temperature	260±5℃ max.
	Soldering time	5±1s
No. of solders		2 time max.
Reference for Hand Soldering		
Tip temperature		350℃ max.
Soldering time		3s max.

Notes are common to this series/models.

1. This site catalog shows only outline specifications. When using the products, please obtain formal specifications for supply.
2. For the switch attached, the single-shaft or inner shaft of the dual-shaft type can be chosen.
3. Please place purchase orders per minimum order unit (integer).
4. Products other than those listed in above products are also available. Please contact us for details.
5. This products can be used in vehicles.
Although these products are designed to perform over a wide operating temperature range, please ensure that you receive and read the formal delivery specifications before use.